

# - The Bugler -

Vol. 1

JULY, 1929

No. 1

## Editorial

The picture shows Vergil Hall, of Coffeyville, Kansas, one of our students, who blew the bugle the past year, standing near the sign in front of the school building. Vergil is an accomplished musician, his favorite instrument being the violin. By teaching that instrument he helped support himself in school.

A bugler is one who has something important to say and expects to sound it forth loud enough so that it can be heard. That is the object of this little magazine and by the grace of God it will:

Tell the world about Southwestern Bible School.

Warn young people of the dangers of the age in which we live.

Promote the fellowship of and encourage the labors of the students and teachers and friends who are helping build an institution here.

Advance the cause of the Full Gospel throughout the world.

For the present no subscription will be charged, but those who wish copies of the paper as they may appear should send their address and a contribution in order to enable the magazine to continue. Address M. A. Nelson, editor, 316 East Cherokee Ave., Enid, Okla.

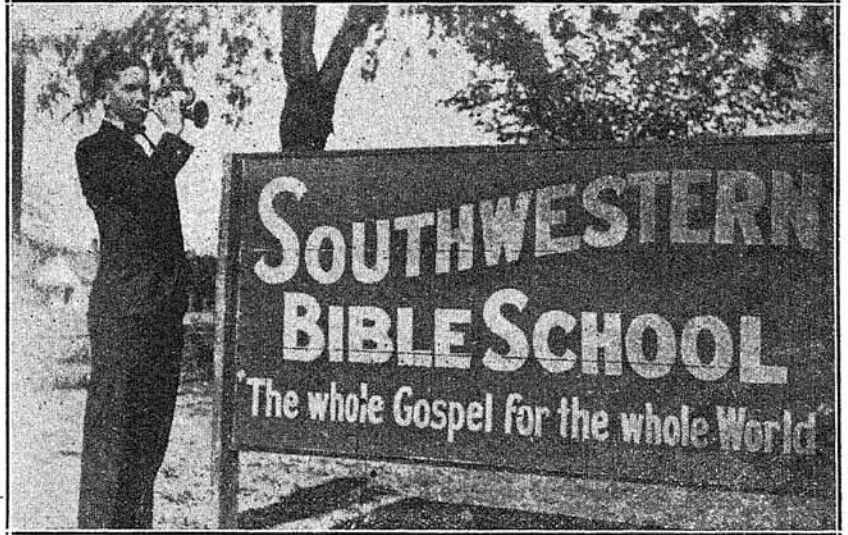
### Southwestern Bible School at Tulsa Rally

The Christ's Ambassadors Rally at Tulsa, June 14-16, 1929, was one of the best the editor has attended. Although the attendance was somewhat small it was not merely meeting together for sociability and listening to oratory, but was an incentive to higher living and a guide to greater achievement.

Clarence Gordon, the new president, and the other officers of Christ's Ambassadors and the pastor and members of the Fifth and Peoria church merit praise for the dignified way in which the Convention was conducted and for the cordial hospitality shown. About twenty Southwestern Bible School students were present and sang as their number on the program a missionary song Saturday night.

### Arkansas Promises Food

The latter part of May, Bro. Jackson and the editor visited Siloam Springs, the home of Lelah Smith, and other Arkansas towns. 200 quarts of fruit and vegetables were promised, which is an example to other assemblies. Although some of the stories about Arkansas may be exaggerated, we do not think that the report about the strawberries in this part of Arkansas belongs to this class, as we were offered all we would pick.



### President in Auto Accident

Many of the students and friends of the school have heard of the auto accident which happened to our President while in Illinois. He ran into a cement culvert and suffered cuts and bruises and the car was badly damaged. We praise God that it was not more serious. His address is: General Delivery, Hamilton, Ontario.

### Students at Work

Some of our students are in secular work, earning money to come back to school and others are gleaning in the Lord's great harvest field.

Miss Irene Street just closed a meeting in Faith Tabernacle, Oklahoma City. A number of the students visited the meeting.

Miss Ruth Cox closed a campaign in Pawhuska recently. Mrs. F. E. Conrad reported that they had a fine revival. Celia Swank has been in Pawhuska the past month.

Helen Harding with her sister Esta is conducting a revival at Fairland, Okla.

Three of our students played in the orchestra at the Christ's Ambassadors Rally at Tulsa. George Baker, Leland Hanks, and Nina Pease. George and Leland and Charles Hart may be addressed at 411 S. Frisco, Tulsa.

Two of our boys are working in Battle Creek, Edwin Davis, 334 Maple St., and John Campbell, 37 Stayman St.

Bro. W. J. Nelson who is now at Mutual, Okla., and Ben Livengood expect to work in the harvest. Fred Carington planted a field of cotton since leaving school. Alvie Lyons left for Waco, Texas.

### CAR WANTED

There is a good light delivery car which can be had at a reasonable price which is badly needed to carry supplies of vegetables and fruits and other other gifts from the Assemblies to the Bible School. It would also be useful in carrying students to places to preach and to conventions. The cost is only one hundred dollars. Anyone who wishes to help the school in this way, send in an offering to M. A. Nelson, 316 East Cherokee Ave., Enid, Oklahoma.

# "THE WHOLE GOSPEL FOR THE WHOLE WORLD"



## "THESE ARE OUR JEWELS"

### LOOK AT THIS HAPPY BAND OF SOUTHWESTERN BIBLE SCHOOL STUDENTS !

Does it make you think? The past year there was an enrollment of one hundred and one students from ten states. (Our second year). This is part of the group. We want you to realize the fact that this Southwestern Bible School is **YOUR** Bible school and that these students are **YOUR** young people. Do you know any of them? Is there one from your Assembly? They are a wonderful group of young people, talented and consecrated. Some of them have already rendered successful service as pastors or evangelists.

While the school belongs to the Oklahoma District Council of the Assemblies of God, it is a place where everyone, especially Pentecostal people, may send their young people for training not only for Christian ser-

vice but for other callings in life. For a good Bible Training is a foundation which all need no matter what their occupation.

For many years perhaps you have been praying for just such an institution. There has been a deep felt need of a place where our young people could prepare for life away from a worldly environment and under the influence of the Holy Spirit. This school is an answer to these prayers.

May 7, 1927, a valuable site consisting of half a standard sized block with a large two story brick building was purchased for the purpose of founding a Bible School. A large tabernacle was built the same summer, to make a home for the Assembly of which Evangelist P. C. Nelson is Pastor, and to make spiritual home for the faculty and students of the Bible School. Plans are on foot for another large building to be used as a dormitory for men and a dining room and kitchen, increasing the capacity to two hundred students.

## "ARE THEY YOURS?"

### WHO IS RESPONSIBLE FOR THEIR TRAINING?

These young people are jewels not in the sense that they are wealthy in this world's goods but in their love to Jesus Christ and consecration to His service. The early church paid great attention to the training of its young people and ministers. Several books of the Bible are written for this special purpose. This obligation still rests upon the church. It rests in fact upon many persons.

It rests in part upon the students themselves. We are glad to say that our students are willing to make great sacrifices in order to show themselves approved unto God workmen that need not to be ashamed. Many of them are working their way through. Our school is adapted to just such students as the founders and teachers have not forgotten their own early struggles.

It rests in part upon the parents. It is their duty to give their children the best training possible. Many ministers and lay-

men have recognized this and have sent their children to this school and have given liberally to its support.

It rests partly on the school. We are doing our part by making the expenses so low (Only four dollars a week for board and room) that every worthy student may enter.

**But it also rests with the Assemblies.** Those who have labored to make this school possible never expected to attempt to establish such a school without the cooperation of God's saved and Spirit-filled people. The school will be a constant blessing to the assemblies. Already its influence is being felt in many of them, and this benefit we believe will increase. The school is the joint property of and under control of the more than seventy-five assemblies of the state of Oklahoma. Many of them have already nobly helped the school and we believe that they will be willing and glad to continue their support especially during the years that the school is struggling to get started. We wish to thank all who have already helped. But we would like to ask what is your Assembly doing? What has it done? What will **you** do?



---

# WHAT SOUTHWESTERN NEEDS

Many will say: This is just what we need. How can we help? What can we do?

Everyone can help in some way. We enumerate below some of the ways: We will care for every gift to the school in a business like way and endeavor to use it for the glory of God.

1. Our school has been overcrowded. You can help us erect and equip a new building perhaps be used for a new dormitory or dining hall or both. Without this we will have to turn some students away. Would you turn away those whom Jesus Christ is calling to prepare for service?

2. We are starting a canning campaign. There are many kinds of fruits and vegetables which can help feed these students next winter if they are put up. We will furnish you with glass jars and call for the good things to eat you prepare for us in this way if you are unable to bring them to the school.

3. Say a good word for the school to the young people of your acquaintance or in your assembly, or let us know of worthy students, and urge them to enroll.

4. You can pay the tuition or perhaps even the expenses of some one whom you know is called to preach or urge your assembly to do so. (Tuition is Twenty-five dollars a year.)

5. You can give the school some useful gift, such as pictures, rugs, or chairs, beds or quilts, or equip a class room with blackboards, study chairs, tables, or equipment for the laundry or books for the library.

6. You can let us know if your Assembly would like to have a representative call and speak in behalf of the school.

7. You can will funds and property to the school (with a guarantee of an income while you live, if you wish).

8. You can make monthly offerings to the school for a year or term of years. In these and other ways you can minister to Him who said "Inasmuch as ye have done it unto one of these least ye have done it unto me."

9. You can enroll in the school if God opens the way.

10. Pray for the school. Pay us a visit.

---

# WHAT SOUTHWESTERN OFFERS

**Prospective and Former Students:** If you wish to enroll for 1929-1930 school year beginning the last of September send application at once for school will be crowded.

We are here to serve you and the young people who enroll here throughout the entire southwest.

1. Excellent faculty.
2. Improved equipment.
3. Training in practical work.
4. Expenses exceptionally low.
5. Thorough standardized courses.

6. Good opportunities for self-support.
7. Central location in a live growing city.
8. Strong missionary and evangelistic spirit.
9. A wholesome, home-like, spiritual and social atmosphere.
10. School backed by the Oklahoma District Council of the Assemblies of God.

---

Address all correspondence to

P. C. NELSON, President,  
316 E. Cherokee Ave., Enid, Okla.